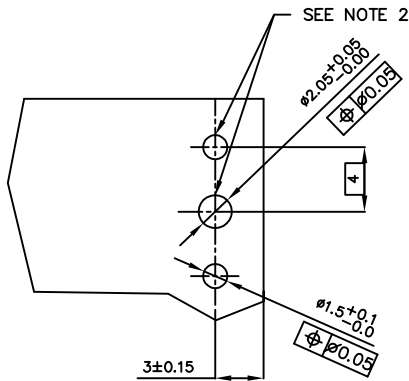
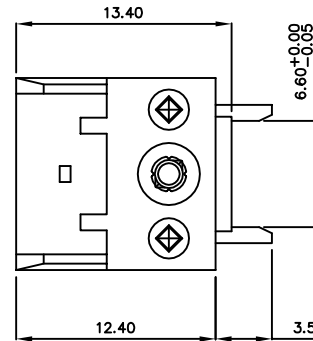
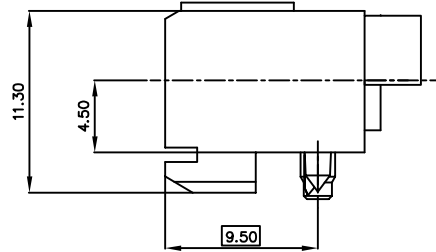
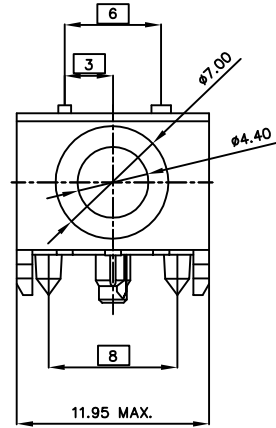


All rights strictly reserved. Reproduction or issue to third parties in any form whatever is not permitted without written authority from the proprietor. Property of FCI. Copyright FCI.

Tous droits strictement reserves. Reproduction ou communication a des tiers interdite sous quelque forme que ce soit sans autorisation ecrite du proprietaire. Propriete de c FCI. Droits de reproduction FCI.



PRODUCT NUMBER
72718-001ALF



RECOMMENDED HOLE PATTERN,
COMPONENT SIDE. NOTE 1

NOTES:

1. PCB LAYOUT IS SHOWN FOR HOUSING REQUIREMENTS ONLY.
2. INDICATED HOLES ARE TO BE UNPLATED
3. THIS PRODUCT WITH "LF" SUFFIX MEETS EUROPEAN UNION DIRECTIVES AND OTHER COUNTRY REGULATIONS AS DESCRIBED IN GS -22-008.
4. THE HOUSING WILL WITHSTAND EXPOSURE TO 260 DEGREE PEAK TEMPERATURE FOR 20 SECONDS IN WAVE SOLDER APPLICATION WITH A 1.6 MM MINIMUM THICK CIRCUIT BOARD.

mat'l. code		---		tolerances unless otherwise specified		CUSTOMER COPY		 www.fciconnect.com		
ltr	ecn no	dr	date	linear	.X ±.3	projection	title			
A	V21618	CGD	10/10/02		.XX ±.13	 MM	METRAL R/A COAX RECEPTACLE HOUSING			
B	B20167	GNV	021015	angles	.XXX ±.051		product family	METRAL	code	213
C	D605-0372	CLu	051007		0° ±2'	scale	A	72718	sheet	1 of 1
				dr	C. DAILY	10/10/02				
				enr	M. GRAY	10/10/02				
				chr	M. GRAY	10/10/02				
				appd	M. GRAY	10/10/02				
sheet index	revision sheet	C	1							

PDM: Rev:C

STATUS: Released

Printed: Nov 29, 2007